

JUN 12 1987

CONVENTIONAL SIGNS

| | | | | |
|----------------------------|-------|-----|--------------------------------|-------|
| Center Line | 17 | 18 | Proposed Sewer | _____ |
| Existing R/W | ----- | | Telephone Line | —T—T— |
| Proposed R/W | ===== | | Power Line | —P—P— |
| Slope Easement | ----- | | Channel Easement | ----- |
| Property Line | ----- | 1/2 | Railroads | +++++ |
| Fence Line | —x—x— | | Existing Retaining Wall | ===== |
| Water Line | —w—w— | | Existing Guard Rail | ----- |
| Gas Line | —g—g— | | Proposed Guard Rail | ----- |
| Existing Sewer | ----- | | Work Agreement | ----- |
| Water Valves | ⊗ | | Gas Valves | ⊙ |
| Existing Manholes | ⊗ | | Existing Catch Basins | ⊠ |
| Proposed Manholes | ● | | Proposed Catch Basins | ■ |
| Manholes Adjusted to Grade | ⊙ | | Catch Basins Adjusted to Grade | ⊠ |
| Manholes Abandoned | ⊗ | | Catch Basins Abandoned | ⊗ |
| Manholes Removed | ⊗ | | Catch Basins Removed | ⊗ |
| Power Pole | ⊙ | | Telephone Pole | ⊙ |
| Light Pole | ⊙ | | | |
| Trees to be Removed | ⊗ | | | |

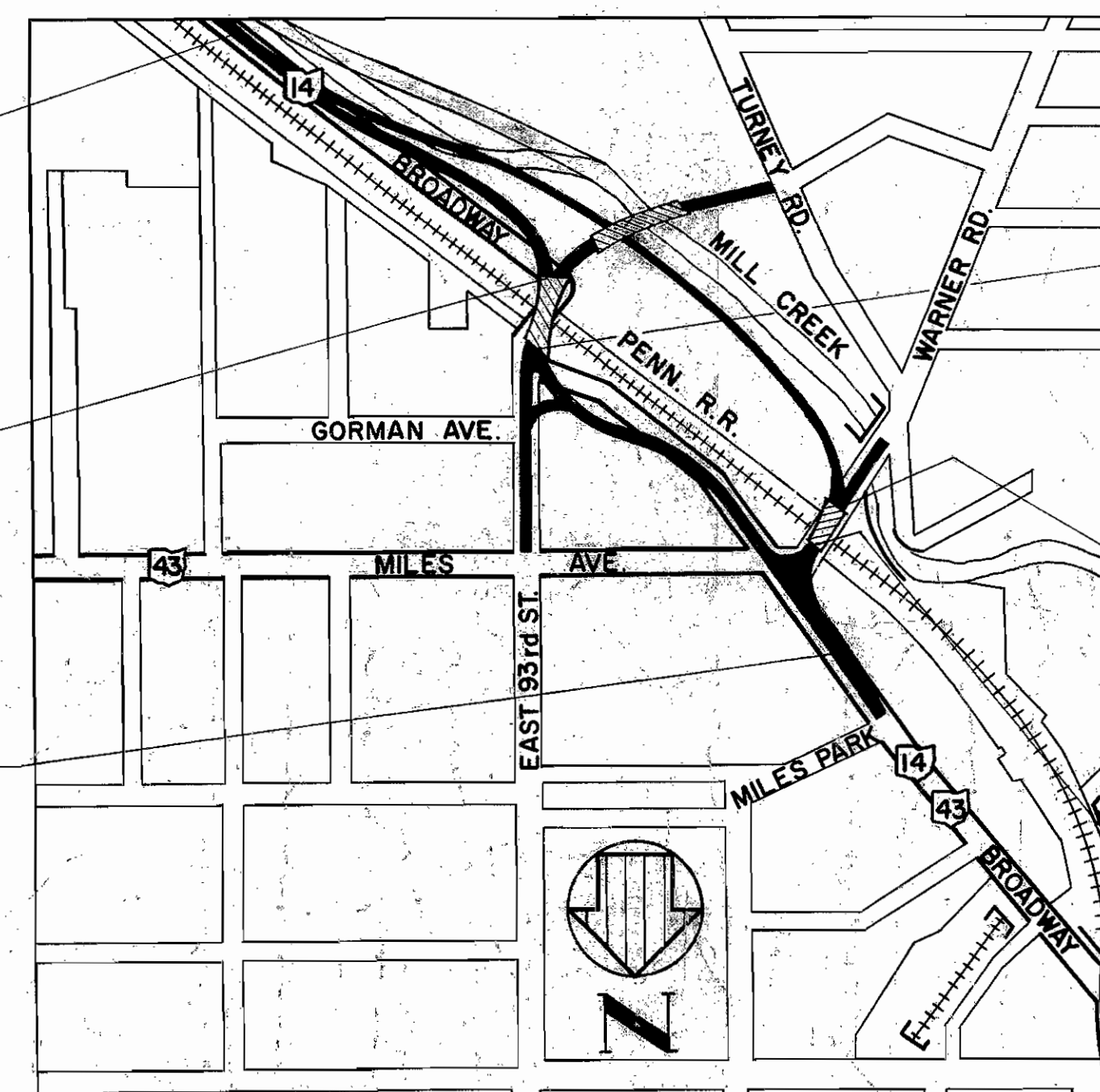
STATE OF OHIO
DEPARTMENT OF HIGHWAYSWARNER ROAD-BROADWAY-EAST 93rd STREET
TRAFFIC INTERCHANGECUY-14-5.50
CITY OF CLEVELAND-CUYAHOGA COUNTYRECONSTRUCTION & EXISTING SEPARATED CROSSINGS WITH THE PENNSYLVANIA
RAILROAD COMPANY AT WARNER ROAD AND AT BROADWAY

INDEX OF SHEETS

| | |
|---|-----------------------------|
| Title Sheet | 10-11 |
| Sectional Sheet | 10-11 |
| Stage Sheet | 10-11 |
| Typical Sections | 10-11 |
| General Notes | 12-15 |
| Summary of Quantities | 16-17 |
| General Summary | 18-33 |
| Plan & Profile Sheets | 34 |
| Centerline Reference Sheet | 35-59 |
| Cross Section Sheets | 60-63 |
| Pavement Details & Super-elevation Tables | 64-66 |
| Driveway Details | 67 |
| Profile of 48" Sanitary Sewer Relocation | 68 |
| Culvert Protection for Pratt Relief Sewer | 69 |
| Cleveland State Hospital Storm & San. Interceptor Sewer | 70-77 |
| Drainage & Other Details | 78-81, 128-131, 131A & 131B |
| Street Lighting & Signs | 82-127, 101A & 111A |
| Structure over 20' Span | 132-135 |
| Right of Way | |

LINE DATA

| | | |
|--|--------------------------------|--|
| Project U-484 (2): | | |
| Sta. 1+50.00 to Sta. 15+01.45 = | 1,351.45 Lin. Ft. | |
| Sta. 16+71.47 to Sta. 28+28.50 = | 1,157.03 Lin. Ft. | |
| Net Length of Project U-484 (2) = | 2,508.48 Lin. Ft. or 0.475 Mi. | |
| Project UG-484 (2): | | |
| Sta. 15+01.45 to Sta. 16+71.47 = | 170.02 Lin. Ft. or 0.032 Mi. | |
| Project U-UG-484 (2): | | |
| U-484 (2) = | 2,508.48 Lin. Ft. | |
| UG-484 (2) = | 170.02 Lin. Ft. | |
| Total Length of Project = | 2,678.50 Lin. Ft. or 0.507 Mi. | |
| Approaches: | | |
| Broadway Sta. 10+20.00 to Sta. 13+00.00 = | 279.82 Lin. Ft. | |
| Broadway Sta. 28+28.50 to Sta. 30+38.09 = | 209.59 Lin. Ft. | |
| E. 93rd St. Sta. 7+82.75 to Sta. 14+75 = | 693.00 Lin. Ft. | |
| E. 93rd St. Sta. 16+50.00 to Sta. 21+73.40 = | 513.40 Lin. Ft. | |
| Total Length of Approaches = | 1,615.81 Lin. Ft. or 0.287 Mi. | |
| Work: | | |
| Total Length of Project = | 2,678.50 Lin. Ft. or 0.507 Mi. | |
| Total Length of Approaches = | 1,515.81 Lin. Ft. | |
| Total Length of Project = | 4,194.31 Lin. Ft. or 0.794 Mi. | |

Begin Project
U-UG-484-(2)
Sta. 1+50.00 (NB)
SLM 5.50Suspend
U-484-(2)
Begin
UG-484-(2)
Sta. 15+01.45 (NB)
SLM 5.50End Project
U-UG-484-(2)
Sta. 28+28.50 (NB)
SLM 5.50Delivery Point Penn. R.R. State Hospital Siding.
Average Haul 1.75 Miles

LOCATION MAP

SCALE 1" = 400'

Portion to be Improved
State Highways
City Streets
Relocated Mill Creek

SCALES

PLAN 1" = 20'
PROFILE 1" = 20' HORIZ. & 1" = 5' VERT.
CROSS SECTIONS 1" = 10' HORIZ. & VERT.

SUPPLEMENTAL SPECIFICATIONS

| NUMBER | DATE | NUMBER | DATE |
|--------|--------------|--------|------|
| 1-8 | Rev. 6-15-59 | | |
| 3-8 | Rev. 5-28-48 | | |
| 8-219 | Rev. 3-12-59 | | |
| 1-124 | 1-11-59 | | |
| 1-128 | 7-31-59 | | |
| 1-129 | 7-9-59 | | |
| 5-207 | 4-28-55 | | |

MAR 11 1965

GROUND PHOTO LAB

| FED. RD. DIVISION | STATE | PROJECT | TYPE FUNDS |
|-------------------|-------|-------------|------------|
| 2 | OHIO | U-UG-484(2) | 135 |

CUYAHOGA COUNTY
CUY-14-5.50

U-UG-484(2)

The Standard Specifications of the State of Ohio, Department of Highways, including changes and supplemental specifications listed in the proposal, shall govern this improvement.

The Right of Way for this improvement will be provided by the State of Ohio.

I hereby approve these plans and declare that the making of this improvement will not require the closing to traffic of any State Highways, except as shown on sheets no. 3, 4 & 5 and that the provisions for the maintenance and safety of traffic will be as set forth on the plans and estimates.

Approved Wm B. Henry
Date 10/19/59 Division Deputy DirectorApproved Guy E. Nepper
Date 11-10-59 Deputy Director of Planning & ProgrammingApproved W. Overman
Date 10-5-59 Engineer of BridgesApproved W. Overman
Date 11-6-59 Engineer of Location & DesignApproved CW McCaughy
Date 11-9-59 Deputy Director of Design & ConstructionApproved W. Berry
Date 11-10-59 First Assistant DirectorApproved E. S. Ruston
Date 11-16-59 Director of HighwaysApproved Louis L. Drasler
Date 10/19/59 Director of Public Service

For the City of Cleveland

PLANS PREPARED BY
ALDEN E. STILSON & ASSOCIATES, LIMITED
CONSULTING ENGINEERS
COLUMBUS, OHIO CLEVELAND, OHIO

FOR

CITY OF CLEVELAND, OHIO
DEPARTMENT OF PUBLIC SERVICEDEPARTMENT OF COMMERCE
BUREAU OF PUBLIC ROADS

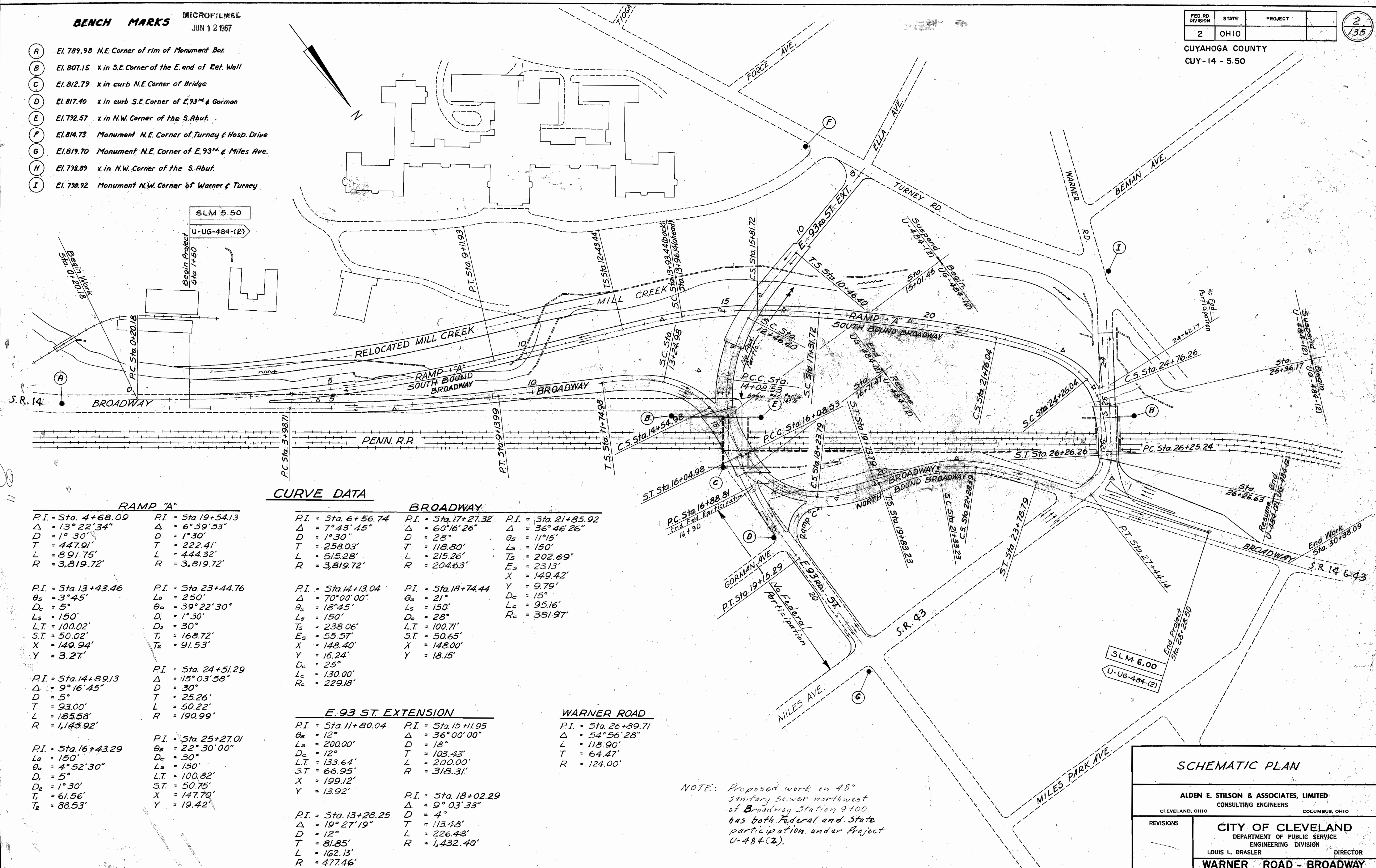
APPROVED

BENCH MARKS

MICROFILMED
JUN 12 1987

- (A) El. 789.98 N.E. Corner of rim of Monument Box
 (B) El. 807.15 x in S.E. Corner of the E. end of Ret. Wall
 (C) El. 812.79 x in curb N.E. Corner of Bridge
 (D) El. 817.40 x in curb S.E. Corner of E. 93rd & Gorman
 (E) El. 792.57 x in N.W. Corner of the S. Abut.
 (F) El. 814.73 Monument N.E. Corner of Turney & Hosp. Drive
 (G) El. 819.70 Monument N.E. Corner of E. 93rd & Miles Ave.
 (H) El. 793.89 x in N.W. Corner of the S. Abut.
 (I) El. 798.92 Monument N.W. Corner of Warner & Turney

| FED. RD. DIVISION | STATE | PROJECT | |
|-------------------|-------|---------|------|
| 2 | OHIO | | 2/35 |

CUYAHOGA COUNTY
CUY-14 - 5.50

NOTE: Proposed work on 48" sanitary sewer northwest of Broadway Station 9+00 has both Federal and State participation under Project U-484(2).

SCHEMATIC PLAN

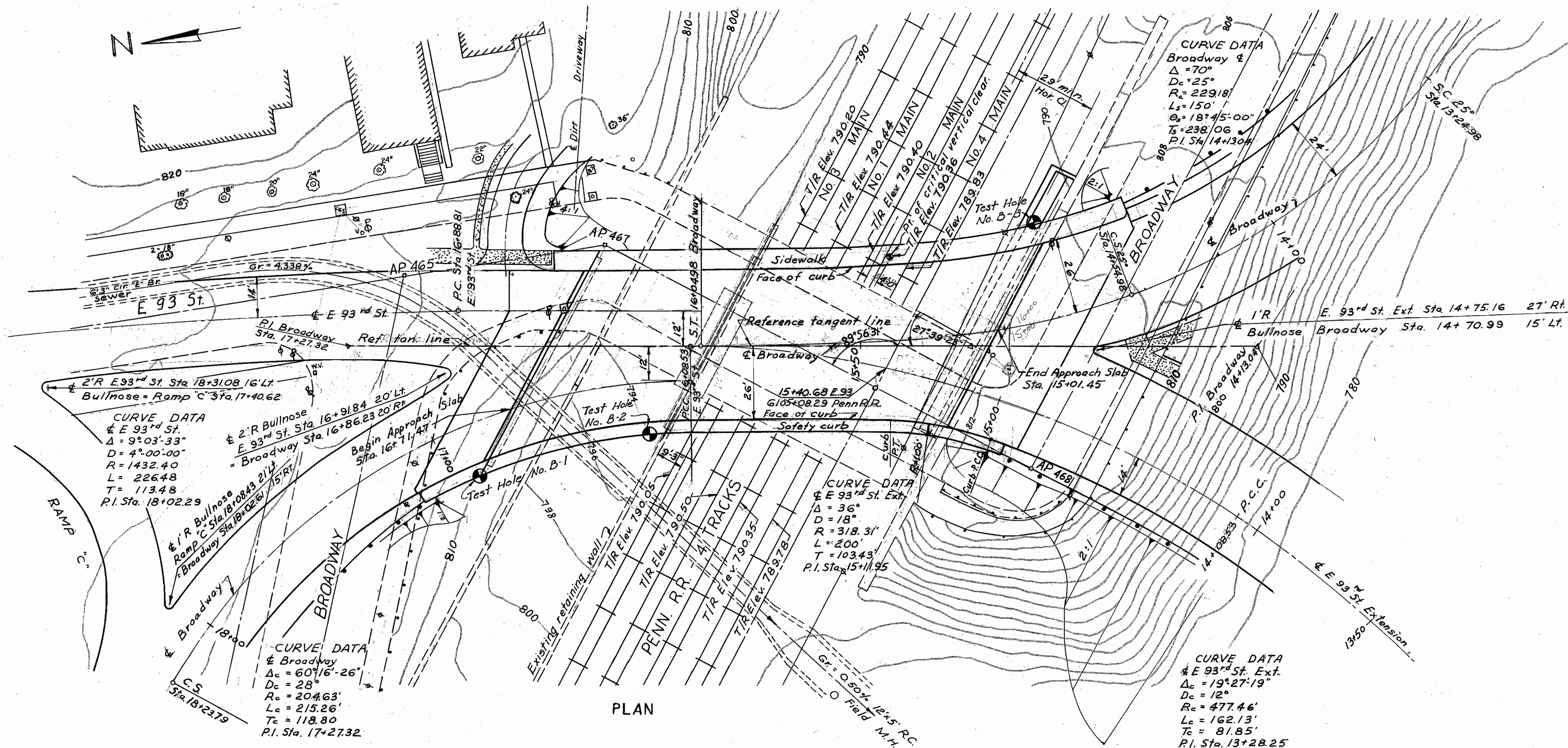
ALDEN E. STILSON & ASSOCIATES, LIMITED
CONSULTING ENGINEERS

REVISIONS

CITY OF CLEVELAND
DEPARTMENT OF PUBLIC SERVICE
ENGINEERING DIVISION

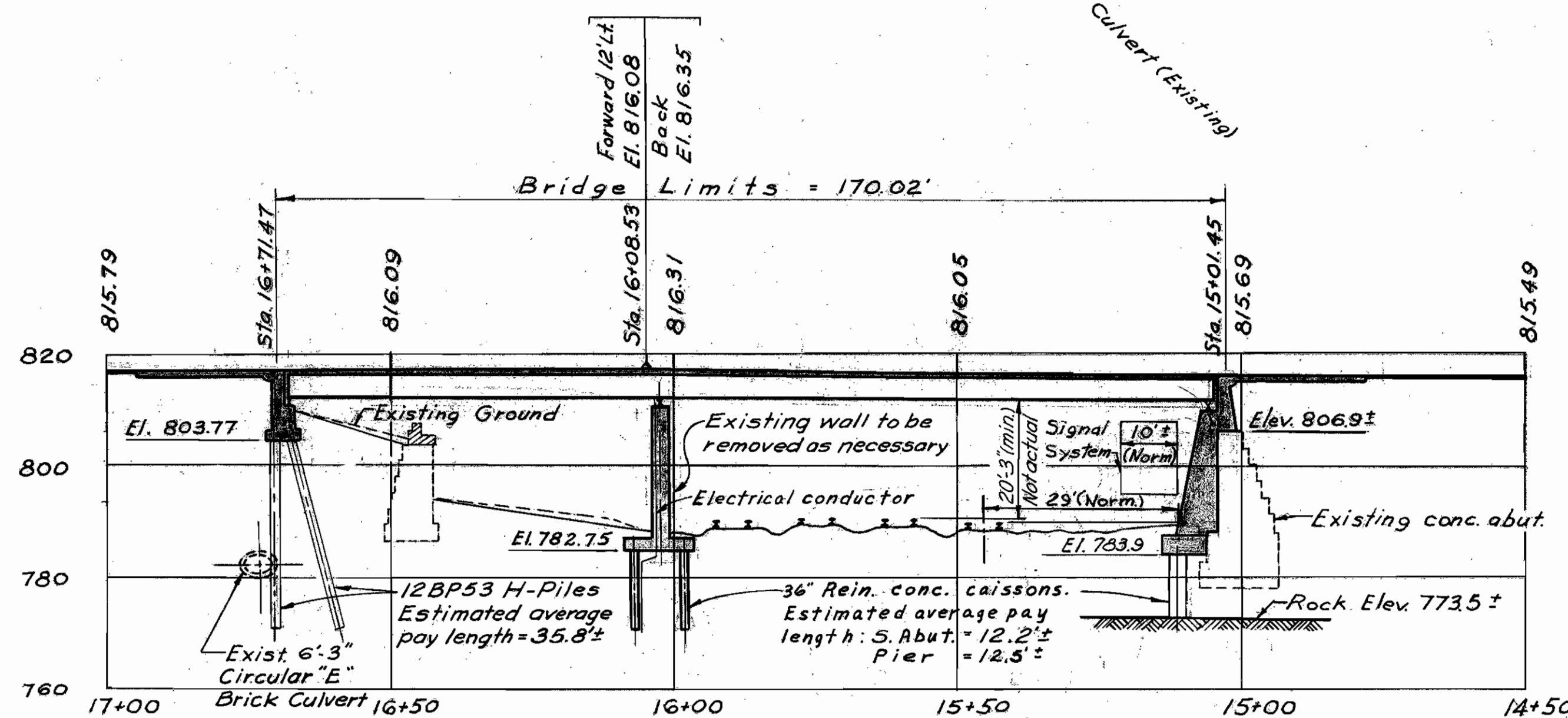
LOUIS L. DRASLER DIRECTOR

WARNER ROAD - BROADWAY



EXISTING STRUCTURE
Type: Half thru pony truss with steel beam approach span and concrete abutments & deck and steel pier
Spans: Truss 87'-0" 4/8 Brgs. - Steel beam 35'-6" 4/8 Brgs.
Roadway: 36'-0" f/r curbs with 8' sidewalks
Loading: unknown
Wearing surface: 1 1/2" Asphalt on brick.
Skew: 0°
Alignment: Tangent

PROPOSED STRUCTURE
Type: Continuous Girder with reinforced concrete deck and substructure
Spans: 94'-8", 54'-4" 4/8 Brgs. along reference tangent line
Roadway: Variable width with 5'-10" sidewalk and 2'-10" safety curb with conc. parapet and alum. railing
Loading: CF-2000(1957)
Wearing Surface: 1" monolithic concrete
Skew: 27°39'23" left forward from reference tangent line
Alignment: Spiral, Tangent, 28° Curve
Approach Slabs: 25' long (As per plan)
Superelevation: Varies (.04% max.)

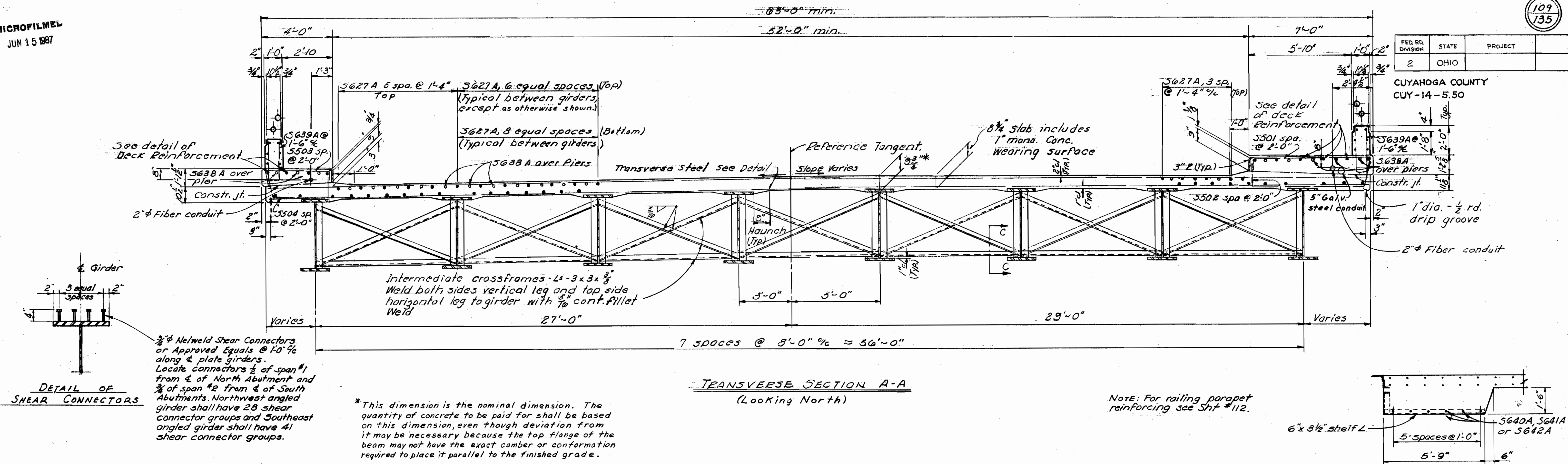


CUY-14A-0015

| SITE PLAN | |
|--|--|
| BROADWAY OVER PENNSYLVANIA R.R. BRIDGE No Cuy-14-0565 | |
| ALDEN E. STILSON & ASSOCIATES, LIMITED CONSULTING ENGINEERS CLEVELAND, OHIO COLUMBUS, OHIO | |
| REVISIONS | CITY OF CLEVELAND DEPARTMENT OF PUBLIC SERVICE ENGINEERING DIVISION LOUIS L. DRASLER DIRECTOR WARNER ROAD-BROADWAY |

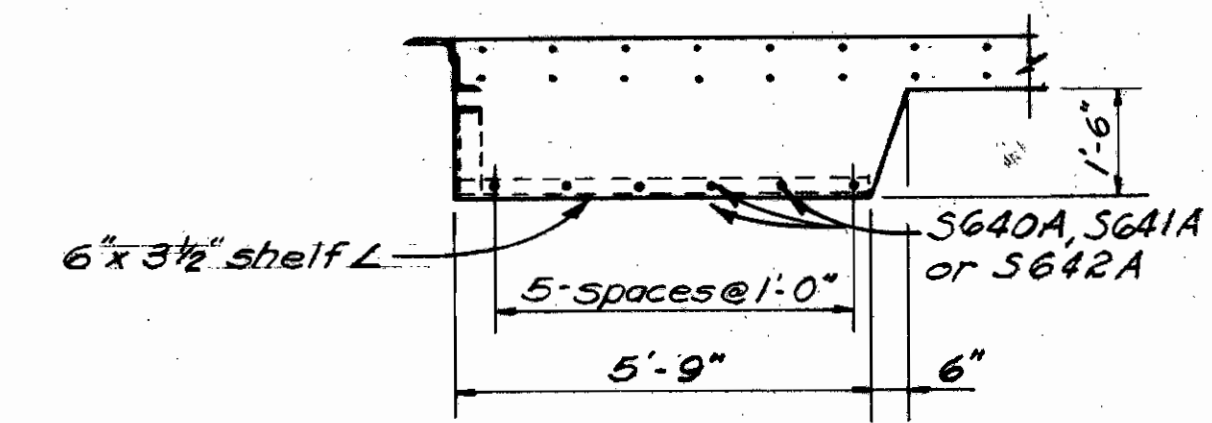
| FED RD DIVISION | STATE | PROJECT | |
|--------------------|-------|---------|--|
| 2 | OHIO | | |

CUYAHOGA COUNTY
CUY-14-5.50



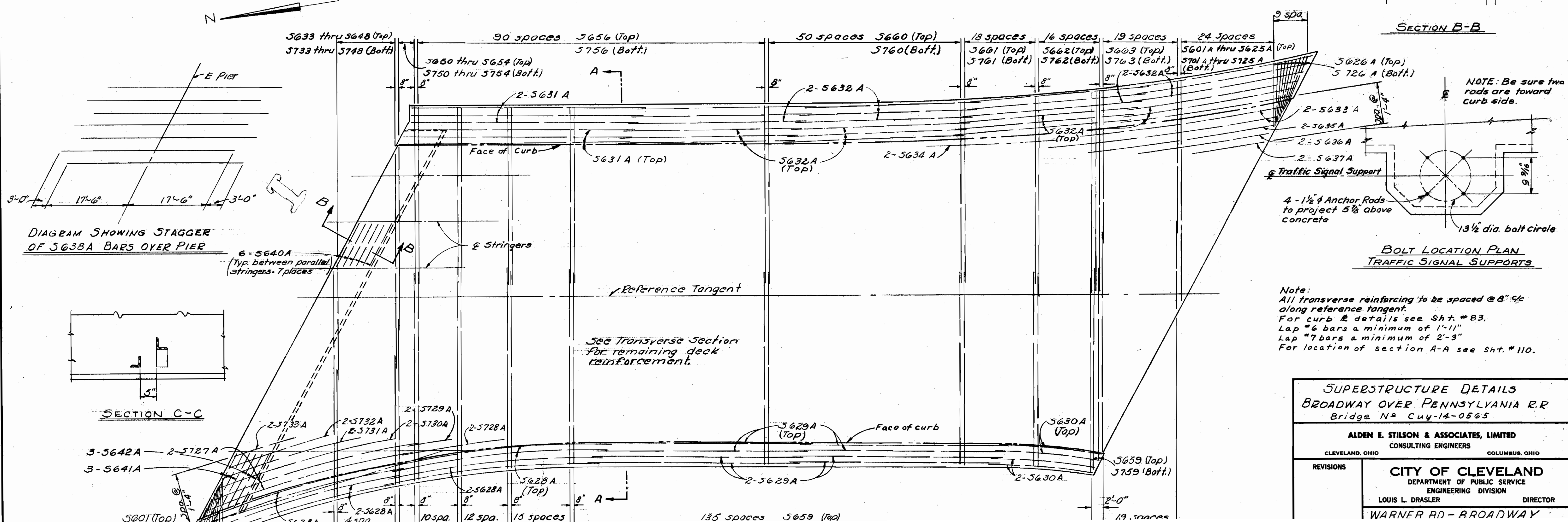
TRANSVERSE SECTION A-A
(Looking North)

NOTE: For railing parapet reinforcing see Sht #112.



SECTION B-B

NOTE: Be sure two rods are toward curb side.



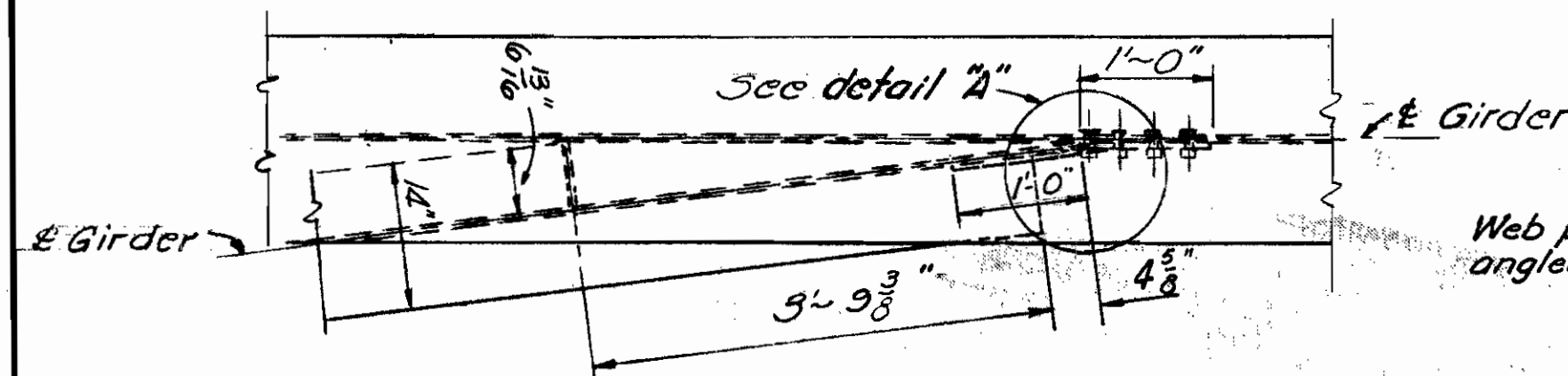
BOLT LOCATION PLAN
TRAFFIC SIGNAL SUPPORTS

Note:
All transverse reinforcing to be spaced @ 8" c/c
along reference tangent.
For curb & details see Sht. # 83.
Lap #6 bars a minimum of 1'-11"
Lap #7 bars a minimum of 2'-3"
For location of section A-A see Sht. # 110.

SUPERSTRUCTURE DETAILS
BROADWAY OVER PENNSYLVANIA R.R.
Bridge No Cuy-14-0565

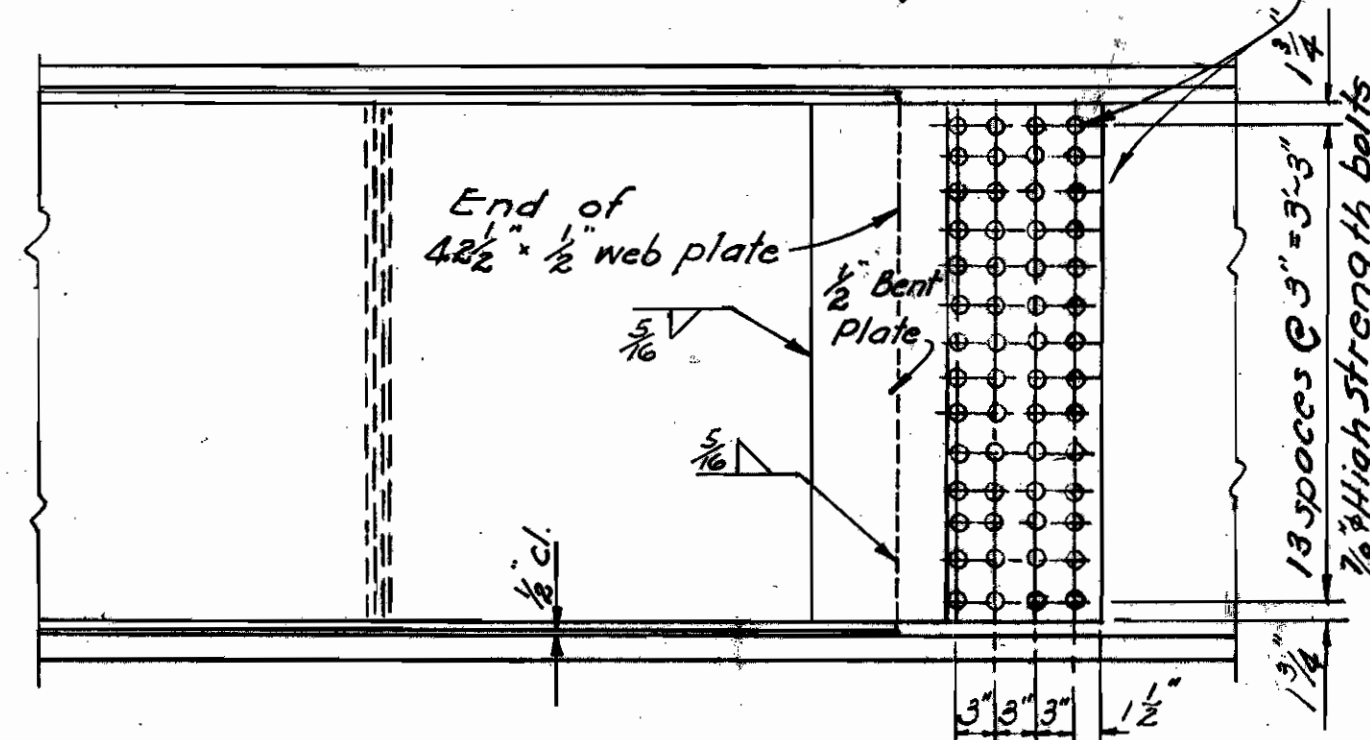
ALDEN E. STILSON & ASSOCIATES, LIMITED
CONSULTING ENGINEERS
CLEVELAND, OHIO COLUMBUS, OHIO

| | |
|-----------|--|
| REVISIONS | CITY OF CLEVELAND |
| | DEPARTMENT OF PUBLIC SERVICE ENGINEERING DIVISION |
| | LOUIS L. DRASLER DIRECTOR |
| | <i>WARNER RD - BROADWAY</i> |

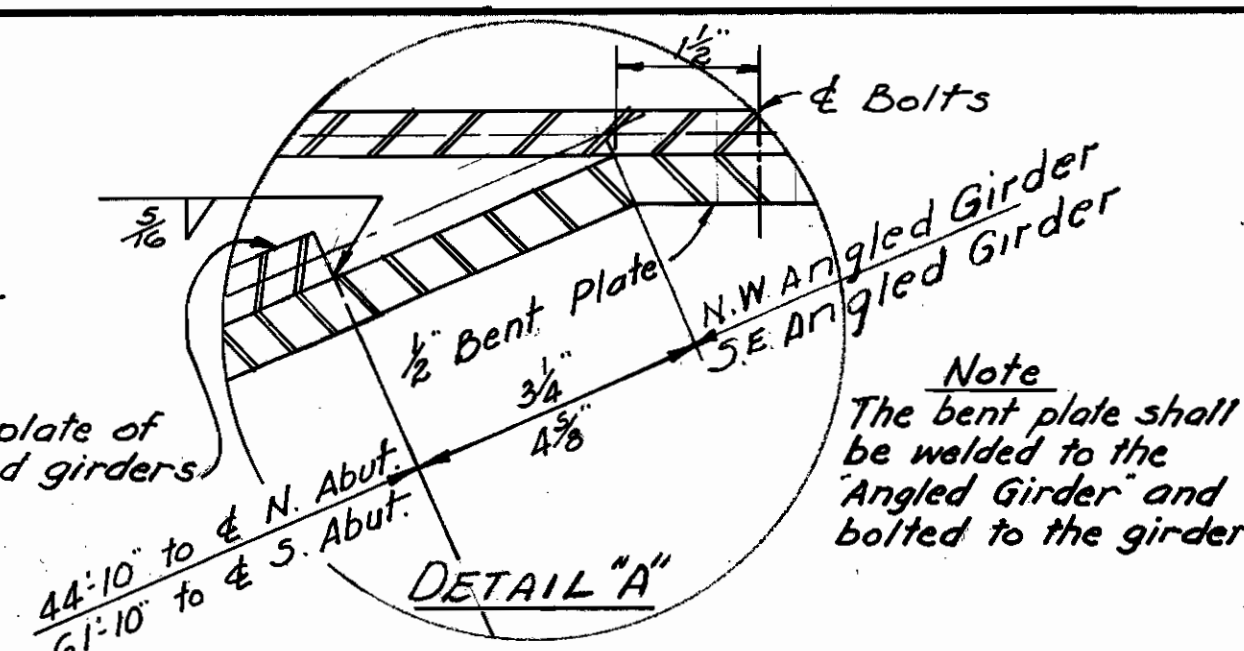


PLAN OF VIEW C-C

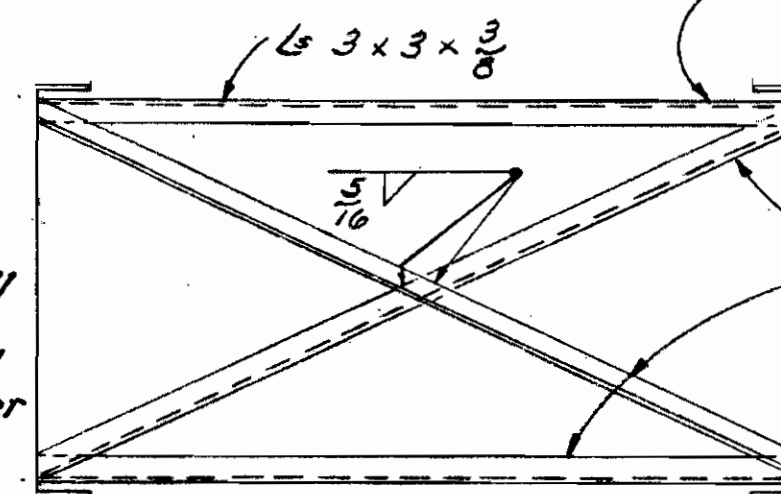
These holes shall be subpunched and reamed assembled or drilled full size while assembled



VIEW C-C

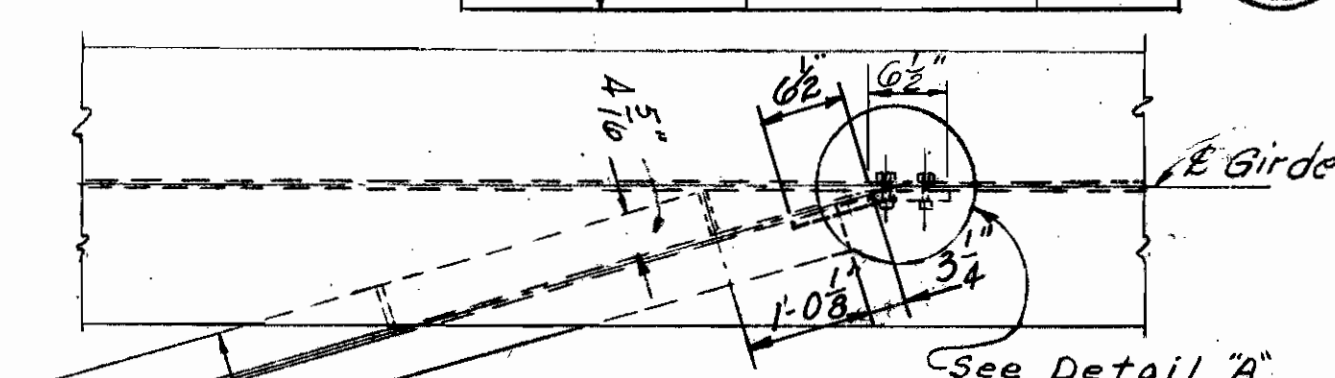


Note
The bent plate shall be welded to the Angled Girder and bolted to the girder



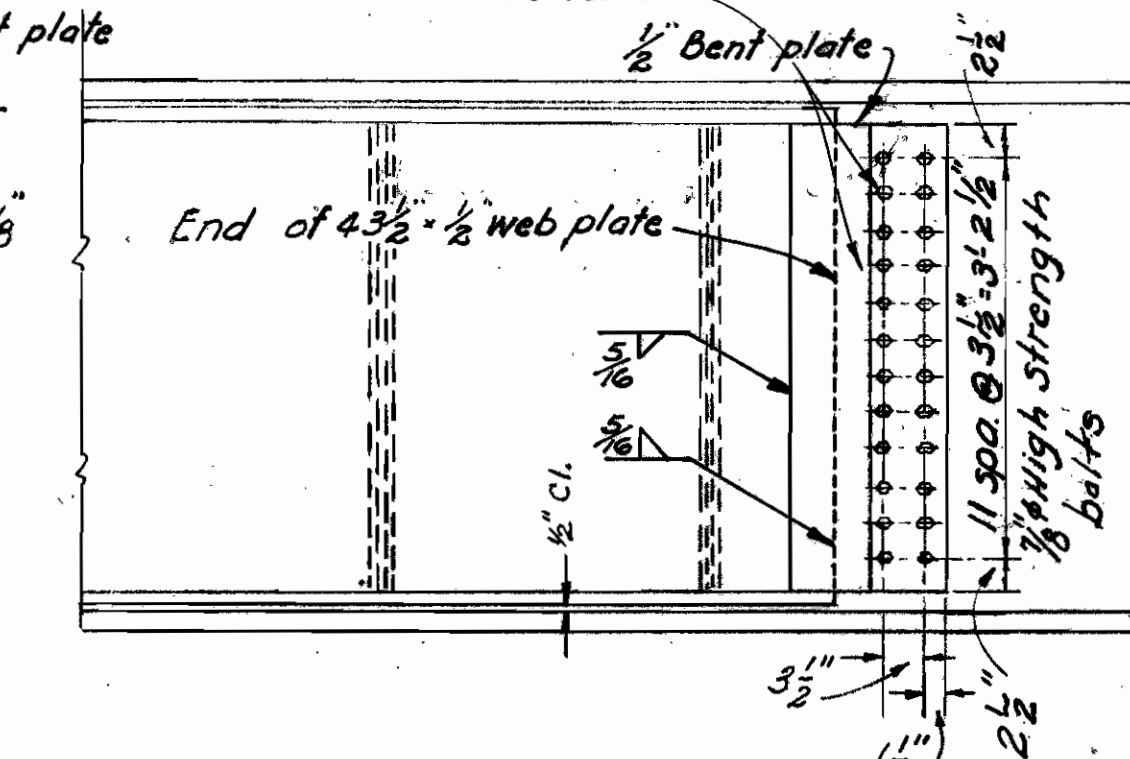
Top horizontal angle - weld the bottom side rather than the top side to girder.

Crossframes - Ls 3x3x3/8 weld both sides of vertical leg and top side of horizontal leg to girder with 1/8\"/>

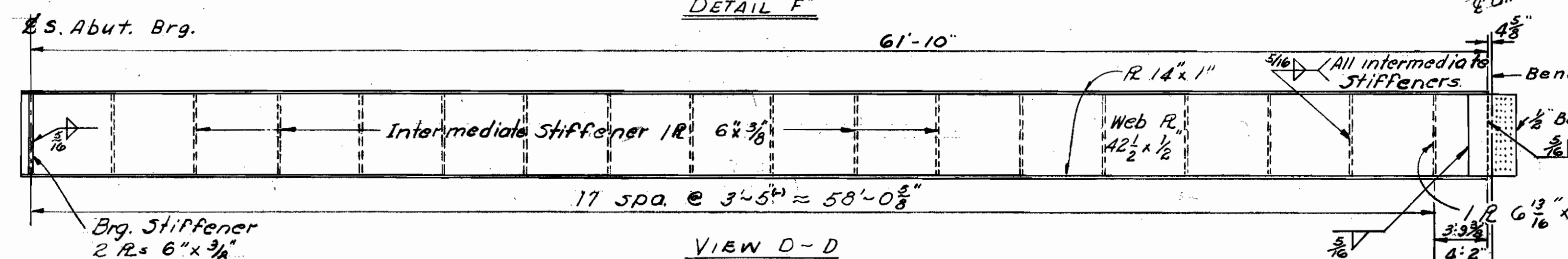


PLAN OF VIEW B-B

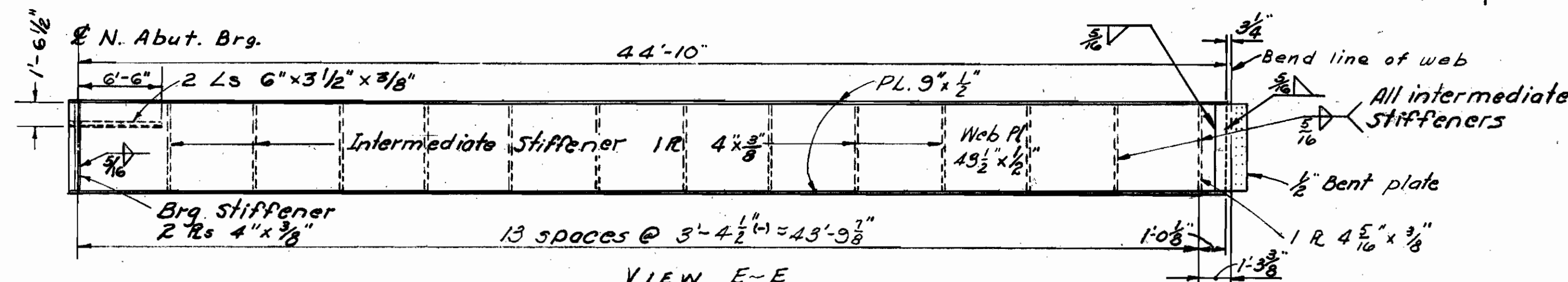
These holes shall be subpunched and reamed assembled or drilled full size while assembled



VIEW B-B



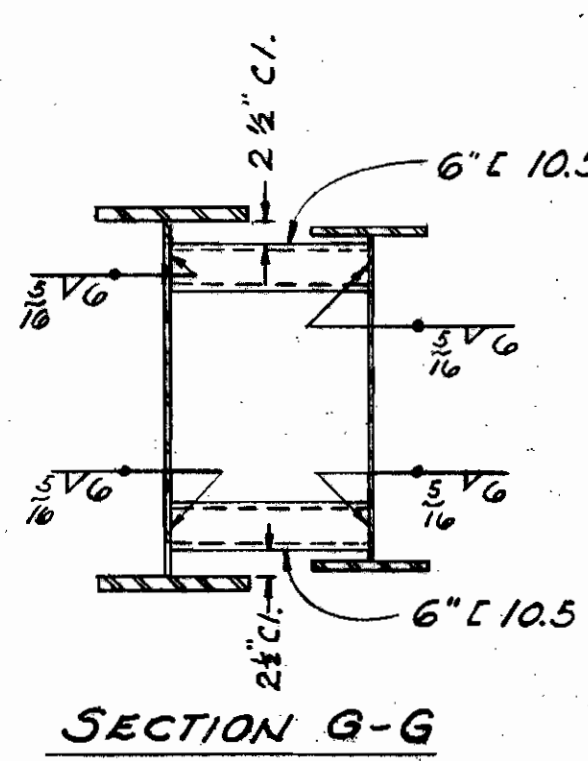
VIEW D-D



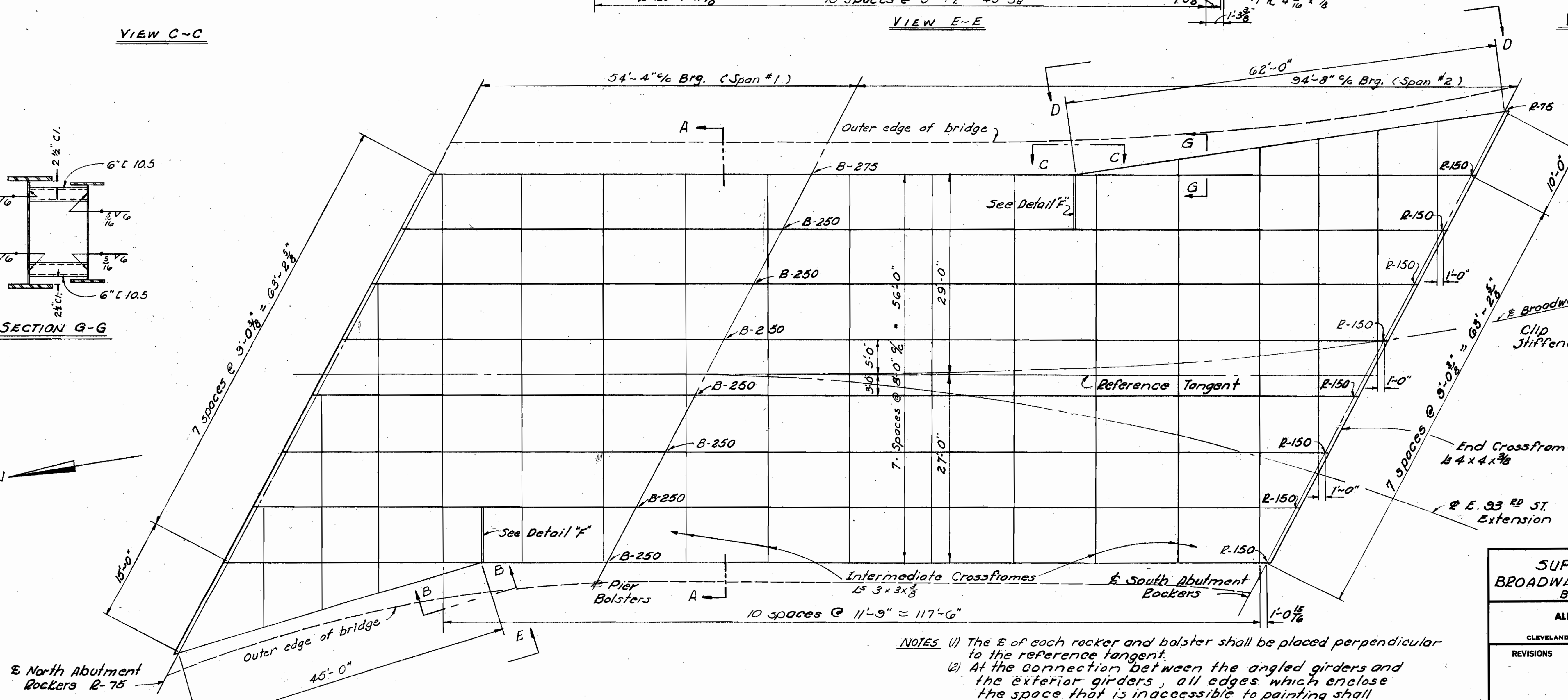
VIEW E-E

Deflection & Camber

| Location | SE angled girder | NW angled girder |
|---------------------------------------|------------------|------------------|
| Deflection due to wt. of steel | 1/8 | 1/8 |
| Deflection due to remaining dead load | 3/8 | 3/8 |
| Camber required for deck curvature | 1/4 | 1/8 |
| Total Deflection | 1 1/4 | 9/16 |
| Camber Required | 1 1/4 | 0 |

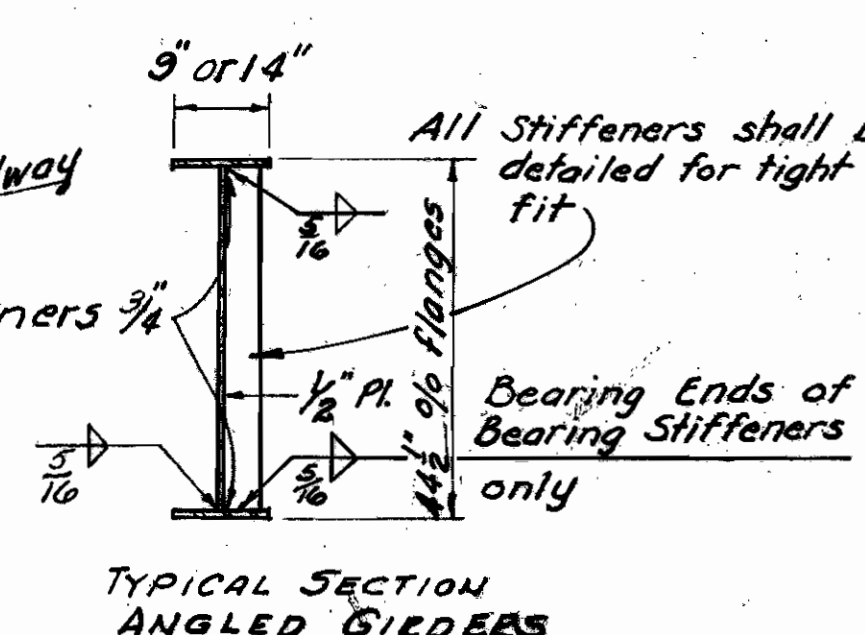


SECTION G-G



FRAMING PLAN

NOTES (1) The E of each rocker and balster shall be placed perpendicular to the reference tangent.
(2) At the connection between the angled girders and the exterior girders, all edges which enclose the space that is inaccessible to painting shall be sealed with a material meeting the requirements of section M-10.23 to prevent the entrance of moisture.



SUPERSTRUCTURE DETAILS
BROADWAY OVER PENNSYLVANIA R.R.
BRIDGE N° Cuy-14-0565

ALDEN E. STILSON & ASSOCIATES, LIMITED
CONSULTING ENGINEERS
CLEVELAND, OHIO COLUMBUS, OHIO

CITY OF CLEVELAND
DEPARTMENT OF PUBLIC SERVICE
ENGINEERING DIVISION
LOUIS L. DRASLER DIRECTOR

WARNER ROAD - BROADWAY